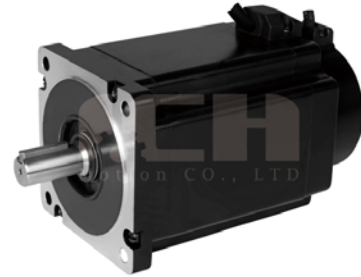


**General Specifications**

Speed: 0-3000RPM  
 Insulation Resistance: 100MIN, 500VDC  
 Ambient Temperature: (0-55)°C  
 Encoder lines: 2500/1000

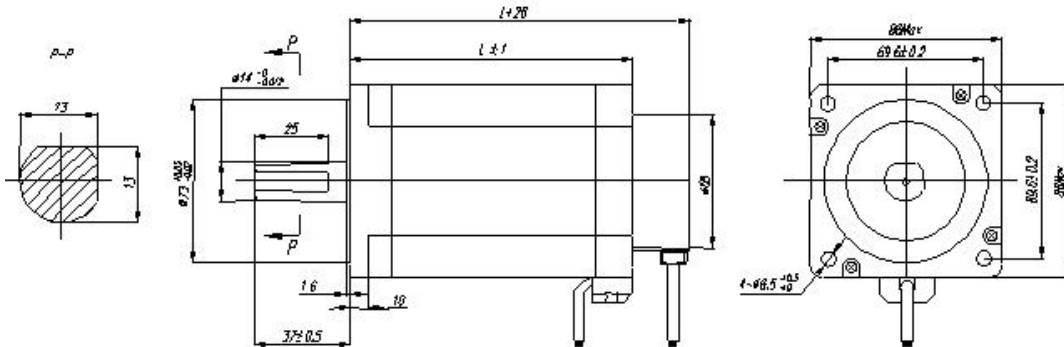
**Picture**



**Electrical Specification**

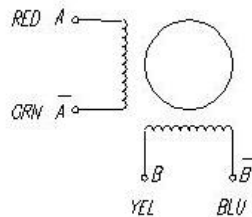
Series Model	Rated Voltage (V)	L (mm)	Phase Current (A)	Phase Resistance (Ω)	Phase Inductance (mH)	Holding Torque (N.cm)	Moment of Inertia (g.cm <sup>2</sup> )	Motor Weight (g)
HS861-42056A	1.68	80	5.6	0.3	3.0	420	1400	2400
HS861-48070A	1.96	80	7.0	0.28	1.8	480	1400	2400
HS861-80056A	2.52	114	5.6	0.45	5.5	800	2700	3720
HS861-80070A	2.66	114	7.0	0.38	3.2	800	2700	3720
HS861-120056A	3.64	150	5.6	0.65	8.4	1200	4000	4500
HS861-120070A	3.15	150	7.0	0.45	5.2	1200	4000	4500

**Mechanical Dimensions**



**Standard Leadwire Configuration**

BI-POLAR(4 LEADS)



**Complementary Products:**

- Special shaft
- Encoders
- Connector
- Long leadwires